

HAZLOC

HARSH & HAZARDOUS
LED LIGHTING



MaxLite[®]

WE TACKLE TOUGH WITH EASE

MaxLite offers a complete range of LED luminaires for your most challenging environments. Utilizing 25 years of lighting expertise and innovation, we provide safe, reliable lighting with unrivaled customer service and warranty support.

High Bay HLRM Series Class I Division 2



MODEL NUMBER	HLRM80U	HLRM120U	HLRM150U	HLRM200U
ORDER CODE	104877	104894	104912	104931
Input Wattage	80W	120W	150W	200W
Voltage	120-277	120-277	120-277	120-277
Delivered Lumens (lm)	12,000 lm	18,000 lm	22,500 lm	30,000 lm
Efficacy (lm/W)	150 lm/W	150 lm/W	150 lm/W	150 lm/W
Color Rendering Index (CRI)	70	70	70	70
Color Temperature (CCT)	5000K	5000K	5000K	5000K
Beam Angle	110°	110°	110°	110°
Replacement	320W MH	450W MH	600W MH	750W MH
Temperature Rating	T4A	T4A	T4A	T4A
Lumen Maintenance (L70)	50,000 hours	50,000 hours	50,000 hours	50,000 hours
Mounting	UNIVERSAL MOUNT	UNIVERSAL MOUNT	UNIVERSAL MOUNT	UNIVERSAL MOUNT
CERTIFICATIONS	cETLus Classified, FCC, IP66	cETLus Classified, FCC, IP66	cETLus Classified, FCC, IP66	cETLus Classified, FCC, IP66

Universal mount is standard for all models. 347-480V; Drop lens and Diffused lens options available. Wire guard, yoke bracket, Wall and Stanchion mount accessories also available

High Bay/Low Bay HLRS Series Class I Division 2



MODEL NUMBER	HLRS45UP	HLRS65UP	HLRS45UX	HLRS65UX
ORDER CODE	103299	103300	14101702	14101704
Input Wattage	42W	65W	42W	65W
Voltage	120-277V	120-277V	120-277V	120-277V
Delivered Lumens (lm)	6,685 lm	10,136 lm	6,685 lm	10,136 lm
Efficacy (lm/W)	158 lm/W	156 lm/W	158 lm/W	156 lm/W
Color Rendering Index (CRI)	≥70	≥70	≥70	≥70
Color Temperature (CCT)	5000K	5000K	5000K	5000K
Beam Angle	110°	110°	110°	110°
Replacement	100W MH	175W MH	100W MH	175W MH
Temperature Rating	T4A-T5	T4A-T5	T4A-T5	T4A-T5
Lumen Maintenance (L70)	50,000 hours	50,000 hours	50,000 hours	50,000 hours
Mounting	PENDANT	PENDANT	CEILING	CEILING
CERTIFICATIONS	UL1598, UL1598A, UL844, FCC	UL1598, UL1598A, UL844, FCC	UL1598, UL1598A, UL844, FCC	UL1598, UL1598A, UL844, FCC

Diffused lens and 347-480V options available. Pendant, Swivel, Ceiling, Wall and Stanchion mount option available.

Jelly Jar HLRS Series Class I Division 2



MODEL NUMBER	HLRS45ULP	HLRS65ULP	HLRS45ULX	HLRS65ULX
ORDER CODE	103301	103302	104722	
Input Wattage	45W	65W	45W	65W
Voltage	120-277V	120-277V	120-277V	120-277V
Delivered Lumens (lm)	5,760 lm	8,900 lm	5,760 lm	8,900 lm
Efficacy (lm/W)	136 lm/W	137 lm/W	136 lm/W	137 lm/W
Color Rendering Index (CRI)	≥70	≥70	≥70	≥70
Color Temperature (CCT)	5000K	5000K	5000K	5000K
Distribution	130°	130°	130°	130°
Replacement	100W MH	175W MH	100W MH	175W MH
Temperature Rating	T4A-T5	T4A-T5	T4A-T5	T4A-T5
Lumen Maintenance (L70)	50,000 hours	50,000 hours	50,000 hours	50,000 hours
Mounting	PENDANT	PENDANT	CEILING	CEILING
CERTIFICATIONS	UL1598, UL1598A, UL844, FCC	UL1598, UL1598A, UL844, FCC	UL1598, UL1598A, UL844, FCC	UL1598, UL1598A, UL844, FCC

347-480V options also available. Pendant, Swivel, Ceiling, Wall and Stanchion mount options available.

Flood HL-AR Series Class I Division 1 & Class I Division 2



'D1' suffix refers to CID1 models.
347-480V options also available.
Trunnion, Tenon and pendant mount
options available.



MODEL NUMBER	HL-AR80UW-50G [-D1]	HL-AR100UW-50G [-D1]	HL-AR150UW-50G [-D1]
ORDER CODE	107618 [1409541]	1409413 [1409543]	107620 [1409545]
Input Wattage	80W	100W	150W
Voltage	120-277V	120-277V	120-277V
Delivered Lumens (lm)	9,600 lm	12,000 lm	18,245 lm
Efficacy (lm/W)	120 lm/W	120 lm/W	120 lm/W
Color Rendering Index (CRI)	≥70	≥70	≥70
Color Temperature (CCT)	5000K	5000K	5000K
Distribution	120°	120°	120°
Replacement	175W MH	400W MH	400W PSMH
Temperature Rating	T4A [T6]	T4A [T6]	T4A [T6]
Lumen Maintenance (L70)	>100,000 hours	>100,000 hours	>100,000 hours
CERTIFICATIONS	UL844, UL1598, UL1598A, DLC Premium	UL844, UL1598, UL1598A, DLC Premium	UL844, UL1598, UL1598A, DLC Premium

Linear HL-LI Series Class I Division 1 & Class I Division 2



40W = 2-FT, 80W = 4-FT
2nd retention point, 347-480V and
battery back up options available.



MODEL NUMBER	HL-LI2440U [P-D1]	HL-LI4880U [P-D1]
ORDER CODE	1409547 [103013]	1409549 [103014]
Input Wattage	40W	80W
Voltage	120-277V	120-277V
Delivered Lumens (lm)	5,480 lm	10,960 lm
Efficacy (lm/W)	130 lm/W	130 lm/W
Color Rendering Index (CRI)	≥70	≥70
Color Temperature (CCT)	5000K	5000K
Distribution	110°	110°
Replacement	150W MH	250W MH
Temperature Rating	T3C [T6]	T3C [T6]
Lumen Maintenance (L70)	>100,000 hours	>100,000 hours
CERTIFICATIONS	UL844, UL1598, UL1598A, DLC Standard	UL844, UL1598, UL1598A, DLC Standard

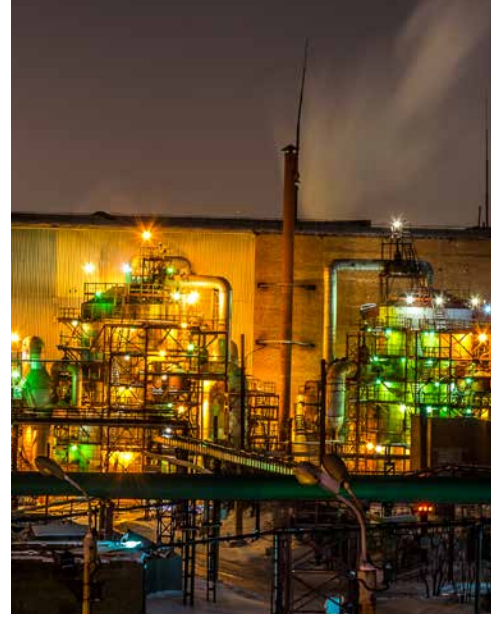
Wall Pack HL-WP Series Class I Division 2



Adjustable and Yoke Mount bracket available.
Rated for through wiring.



MODEL NUMBER	HL-WP26U40	HL-WP26U50	HL-WP43U40	HL-WP43U50
ORDER CODE	14101835	14101734	14101837	14101836
Input Wattage	26W	26W	43W	43W
Voltage	120-277V	120-277V	120-277V	120-277V
Delivered Lumens (lm)	3,199 lm	3,332 lm	5,316 lm	5,538 lm
Efficacy (lm/W)	121 lm/W	126 lm/W	123 lm/W	128 lm/W
Color Rendering Index (CRI)	≥80	≥80	≥80	≥80
Color Temperature (CCT)	4000K	5000K	4000K	5000K
Distribution	110°	110°	110°	110°
Replacement	70W HID	70W HID	150W HID	150W HID
Dimming Compatible	0-10V	0-10V	0-10V	0-10V
Temperature Rating	T4	T4	T4	T4
Lumen Maintenance (L70)	147,000 hours	147,000 hours	147,000 hours	147,000 hours
CERTIFICATIONS	IP66, BAA, ETL	IP66, BAA, ETL	IP66, BAA, ETL	IP66, BAA, ETL



HAZARDOUS LOCATION RATINGS

CLASSES: Define the type of explosive or ignitable substances which are present in the atmosphere.

CLASS	HAZARDOUS MATERIAL IN SURROUNDING ATMOSPHERE
Class I	Flammable gases or vapors are present in the air in quantities sufficient to produce explosive or ignitable mixtures.
Class II	Combustible or conductive dusts are present.
Class III	Ignitable fibers or flyings are present, but not likely to be in suspension in sufficient quantities to produce ignitable mixtures, such as wood chips, cotton, flax and nylon. Group classifications are not applied to this class.

DIVISIONS: Define the likelihood of the hazardous material being present in an ignitable concentration.

DIVISION	PRESENCE OF HAZARDOUS MATERIAL
Division 1	Substance referred to by class is present during normal conditions.
Division 2	Substance referred to by class is present only in abnormal conditions, such as a container failure or system breakdown.

GROUPS: Define the substances by rating their flammable nature in relation to other known substances.

GROUP	HAZARDOUS MATERIAL IN SURROUNDING ATMOSPHERE
Group A	Acetylene
Group B	Hydrogen, fuel and combustible process gases containing more than 30% hydrogen by volume or gases of equivalent hazard such as butadiene, ethylene, oxide, propylene oxide and acrolein.
Group C	Carbon monoxide, ether, hydrogen sulfide, morphine, cyclopropane, ethyl and ethylene or gases of equivalent hazard.
Group D	Gasoline, acetone, ammonia, benzene, butane, cyclopropane, ethanol, hexane, methanol, methane, vinyl chloride, natural gas, naphtha, propane or gases of equivalent hazard.
Group E	Combustible metal dusts, including aluminum, magnesium and their commercial alloys or other combustible dusts whose particle size, abrasiveness and conductivity present similar hazards in connection with electrical equipment.
Group F	Carbonaceous dusts, carbon black, coal black, charcoal, coal or coke dusts that have more than 8% total entrapped volatiles or dusts that have been seized by other material so they present an explosion hazard.
Group G	Flour dust, grain dust, flour, starch, sugar, wood, plastic and chemicals.

Source: NEC/UL

DIVISION 1 & 2	IGNITION TEMPERATURE*
T1	450°C (842°F)
T2	300°C (572°F)
T2A	280°C (536°F)
T2B	260°C (500°F)
T2C	230°C (446°F)
T2D	215°C (419°F)
T3	200°C (392°F)
T3A	180°C (356°F)
T3B	165°C (329°F)
T3C	160°C (320°F)
T4	135°C (275°F)
T4A	120°C (248°F)
T5	100°C (212°F)
T6	85°C (185°F)

* Maximum temperature the fixture will emit without igniting